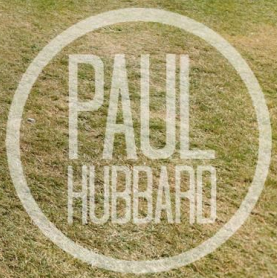


Tenure: Freehold
 Council Tax Band:
 EPC Rating:
 Local Authority:

Energy Efficiency Rating		
	Current	Potential
Very energy efficient - lower running costs		
(92 plus) A		
(81-91) B		
(69-80) C		
(55-68) D		
(39-54) E		
(21-38) F		
(1-20) G		
Not energy efficient - higher running costs		
England & Wales	EU Directive 2002/91/EC	

£45,000
 Asking Price



London Road
 Lowestoft, NR33 7BQ

- Modern 2024 model mobile home
- Situated on the popular Pakefield Holiday Park
- Within walking distance of Pakefield Beach
- Bright and spacious open-plan sitting room, kitchen and dining area
- Contemporary fitted kitchen with integrated appliances
- Two well-proportioned bedrooms
- Modern shower room
- Enclosed decked seating area with outdoor lighting
- Gas central heating and UPVC double glazing
- Ideal holiday home or investment opportunity



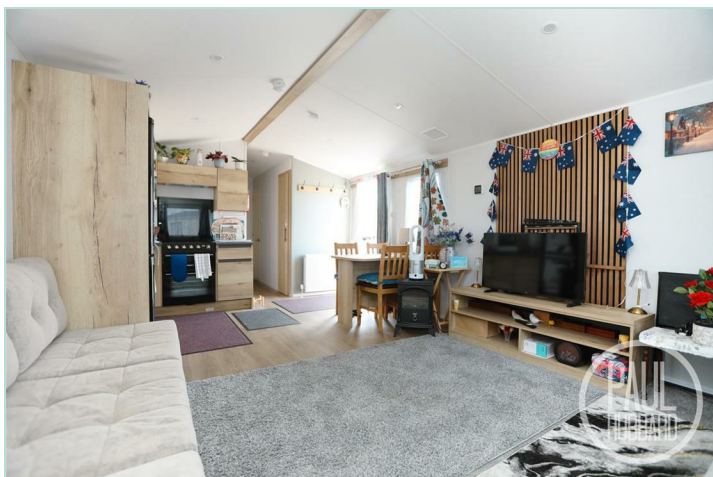
Paul Hubbard Estate Agents
 178-180 London Road South
 Lowestoft
 Suffolk
 NR33 0BB

Contact Us
 www.paulhubbardonline.com
 01502 531218
 info@paulhubbardonline.com

Agents Note: Whilst every care has been taken to prepare these sales particulars, they are for guidance purposes only. All measurements are approximate and for general guidance purposes only and whilst every care has been taken to ensure their accuracy, they should not be relied upon and potential buyers are advised to recheck the measurements

e - info@paulhubbardonline.com

t - 01502 531218



Location

Discover the hidden gem of sought after Pakefield, a charming village nestled in Lowestoft, Suffolk, blessed with award-winning sandy beaches, breath-taking Victorian seafront gardens, and the iconic Royal Plain Fountains. With two piers and an array of independent eateries, there's no shortage of things to do and see. Pakefield is also home to top-rated schools, excellent public transport links, and a vibrant local community.

Sitting room/ Kitchen/ Diner

5.53m max x 3.60m

Entrance door to the side with UPVC double glazed windows to the side and rear aspects. Fitted with a range of wall and base units incorporating a stainless steel sink with drainer, integrated microwave, oven, hob and extractor hood, with space for a fridge/freezer. Vinyl flooring throughout, two radiators, and an open-plan living and dining area featuring integrated sofa seating, providing a comfortable and practical living space.



Hallway

Vinyl flooring throughout and doors opening to a storage cupboard housing the gas boiler, a shower room and bedrooms 1-2.

Shower room

2.19m x 1.05

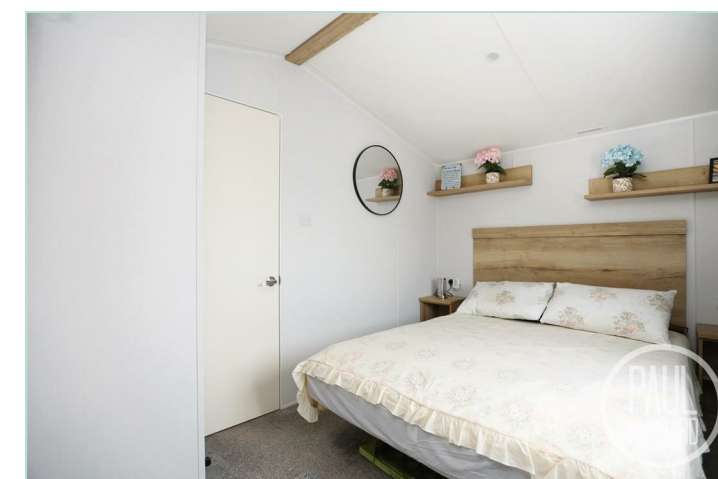
UPVC double glazed obscure window to the side aspect, vinyl flooring throughout, toilet, pedestal wash basin, shower within an enclosed glass cubicle and a heated towel rail.



Bedroom 1

3.58m x 2.45m

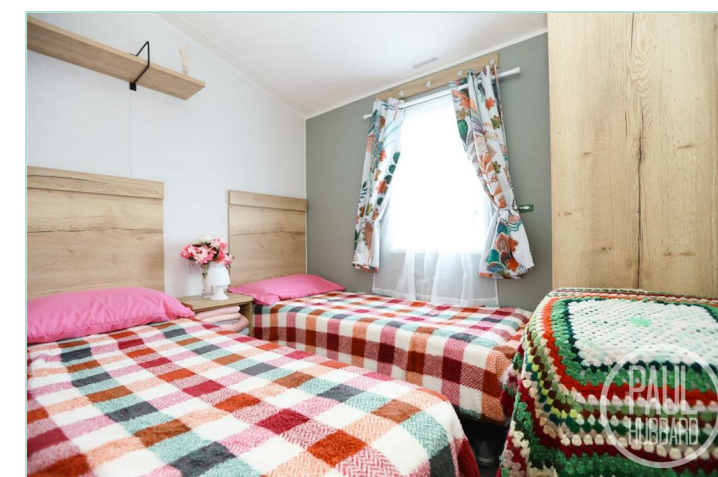
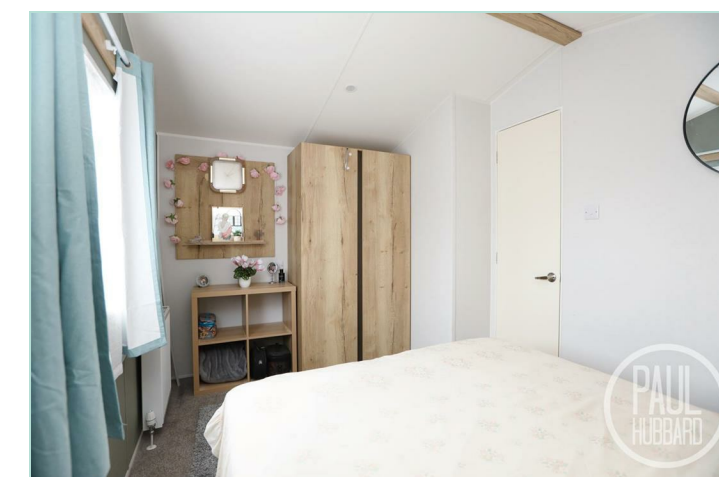
UPVC double glazed window to the front aspect, carpet flooring throughout, a radiator and a built in wardrobe.



Bedroom 2

2.47m x 1.76m

UPVC double glazed window to the side aspect, carpet flooring throughout and a built in wardrobe.



Outside

A pathway leads to steps rising to the decked seating area, providing an ideal space for outdoor seating and entertaining. The decking is enclosed by fencing and benefits from outdoor lighting. The pathway also provides access to the main entrance door.

Agent note

Pitch fee- £4,425.00: Paid 1st January- 31st December 2026.

2024 model.

